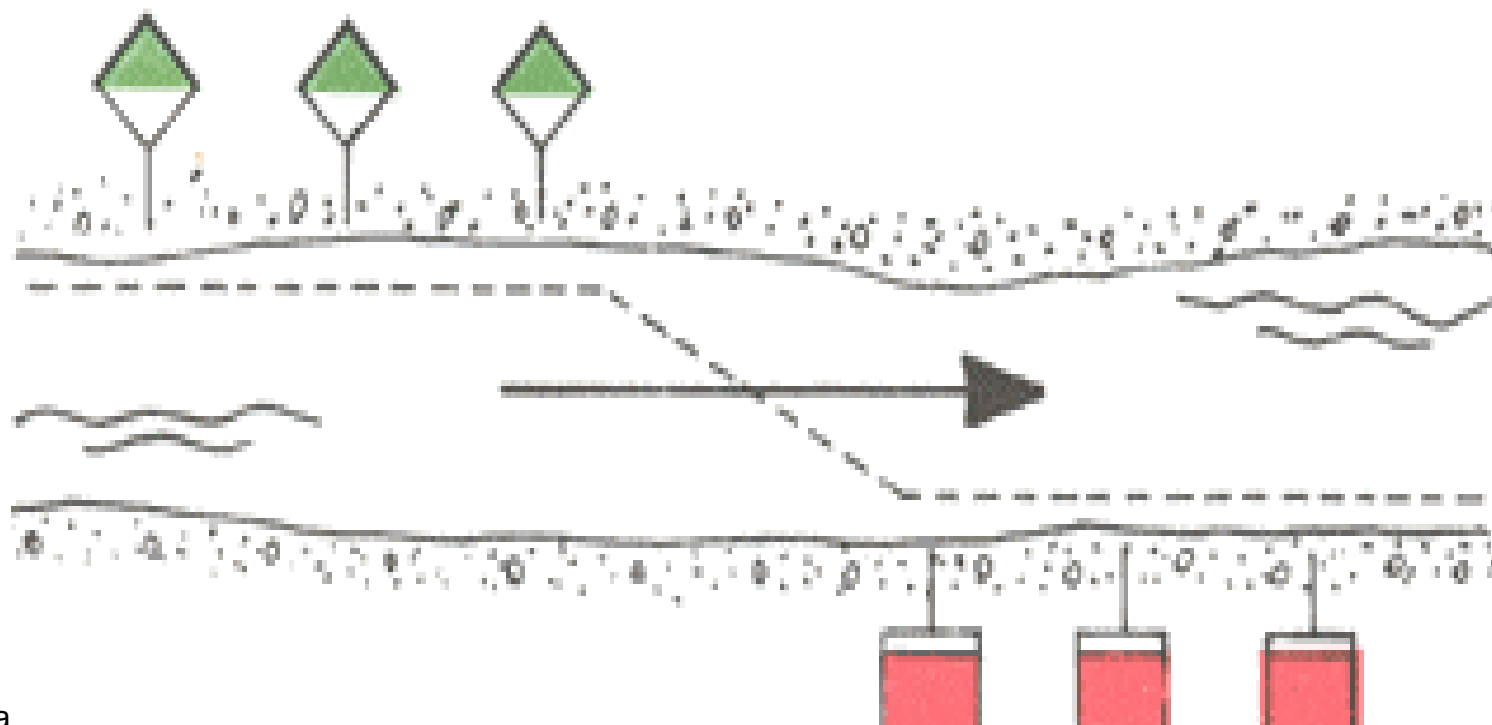
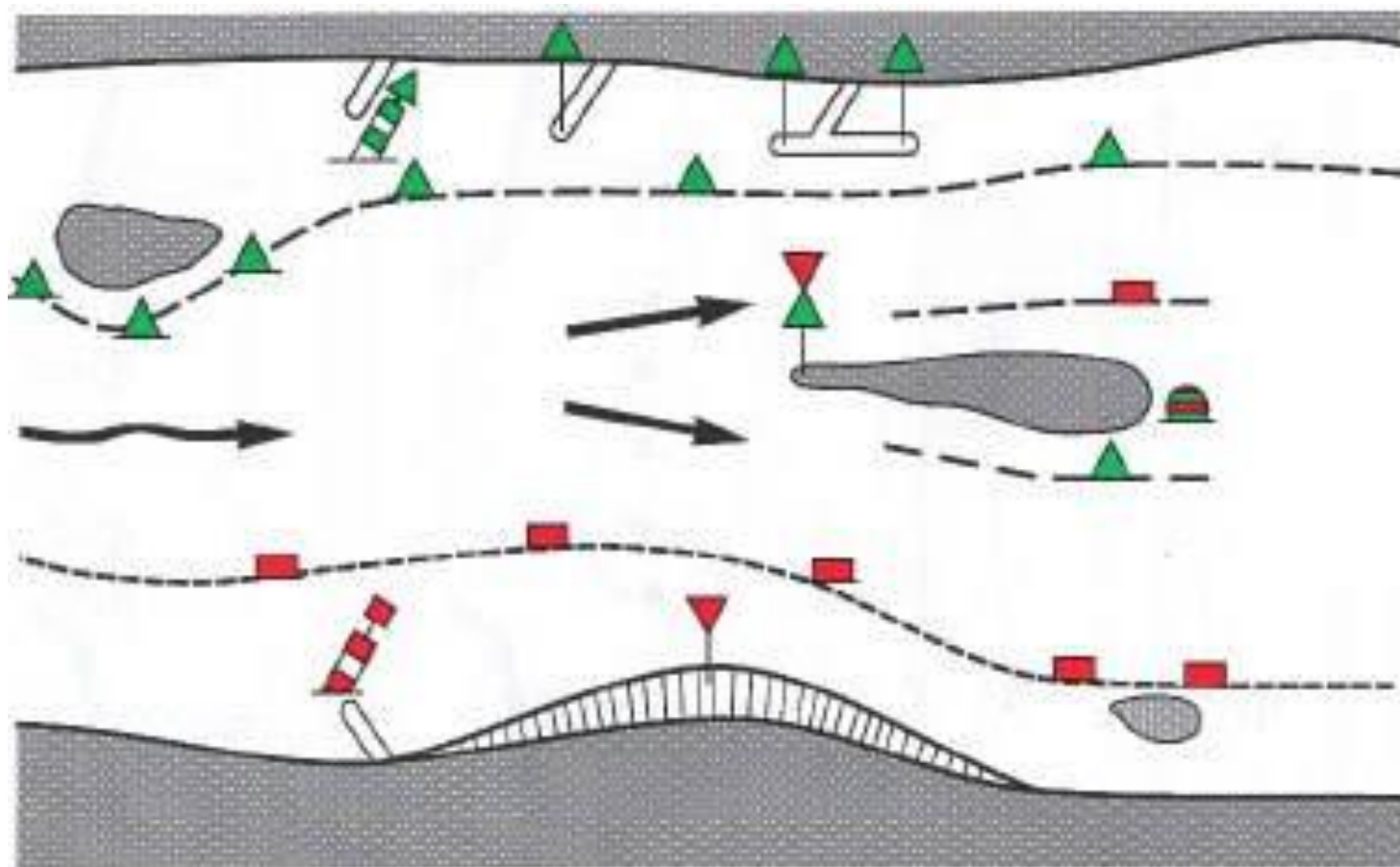


Lijeva obala

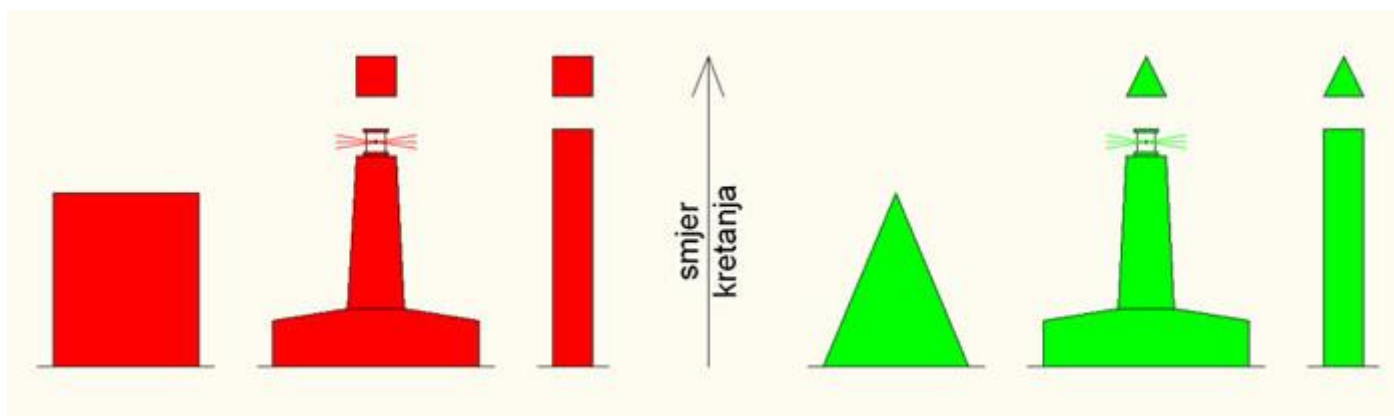


Desna

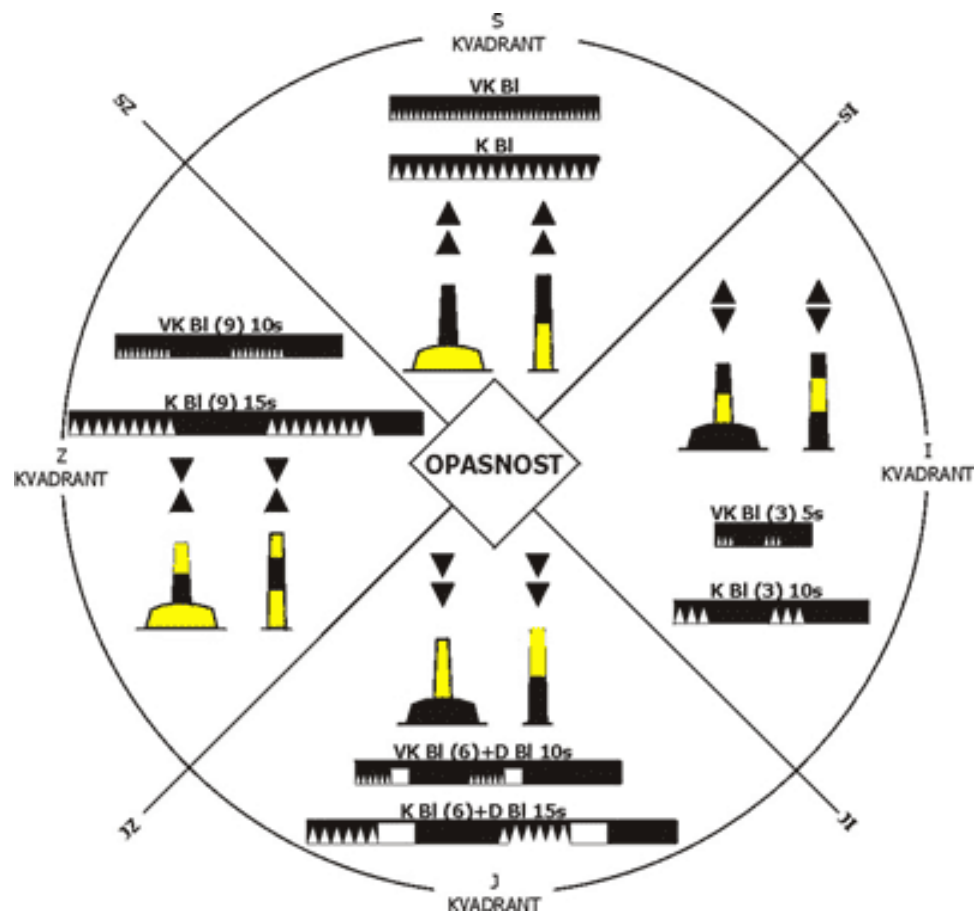
LATERALNE OZNAKE NA RIJEKAMA – OBALNE OZNAKE SE ODREĐUJU POGLEDOM OD IZVORA PREMA UŠĆU
CRVENO JE NA DESNOJ STRANI



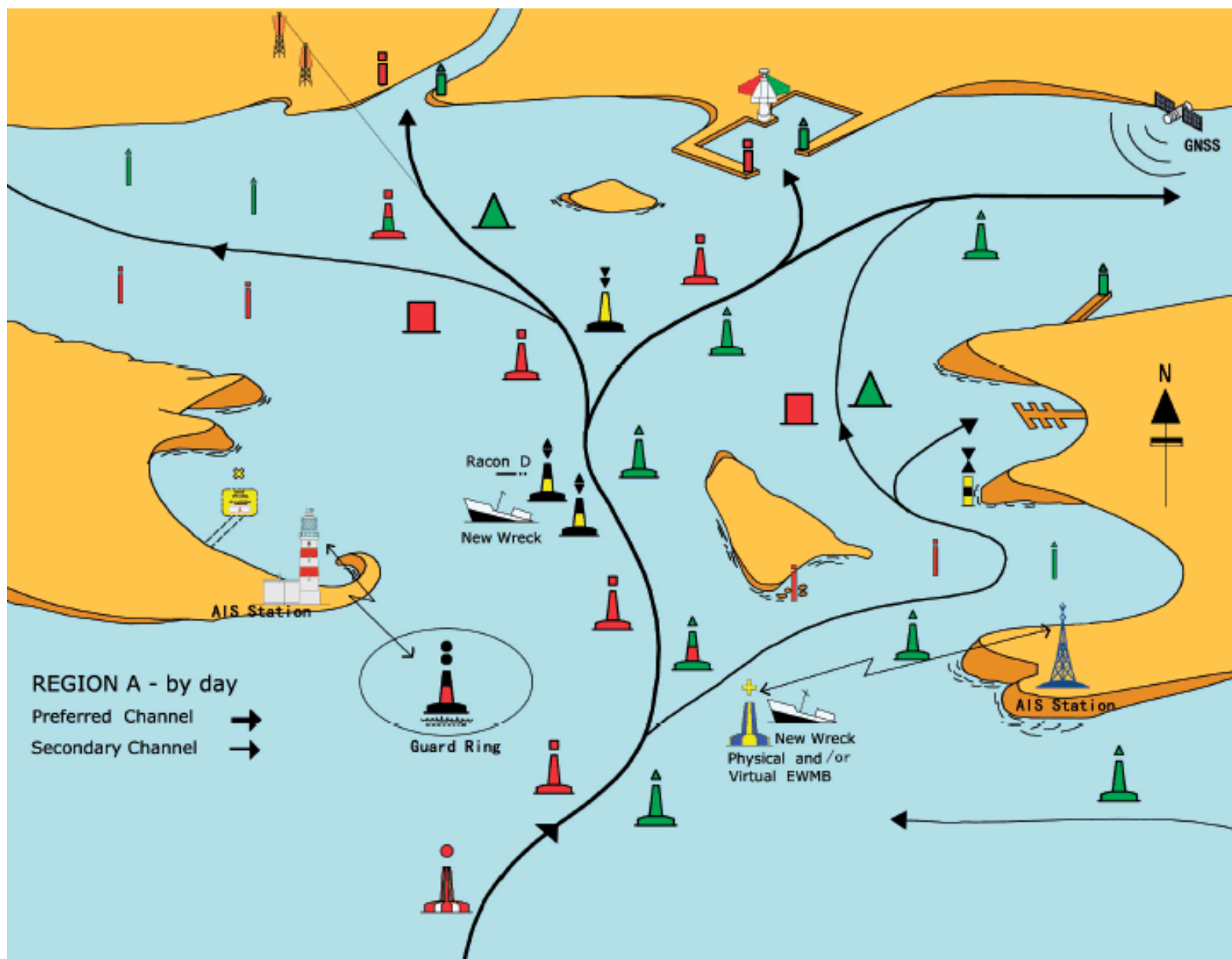
LATERALNE OZNAKE NA RIJEKAMA – PLOVCI



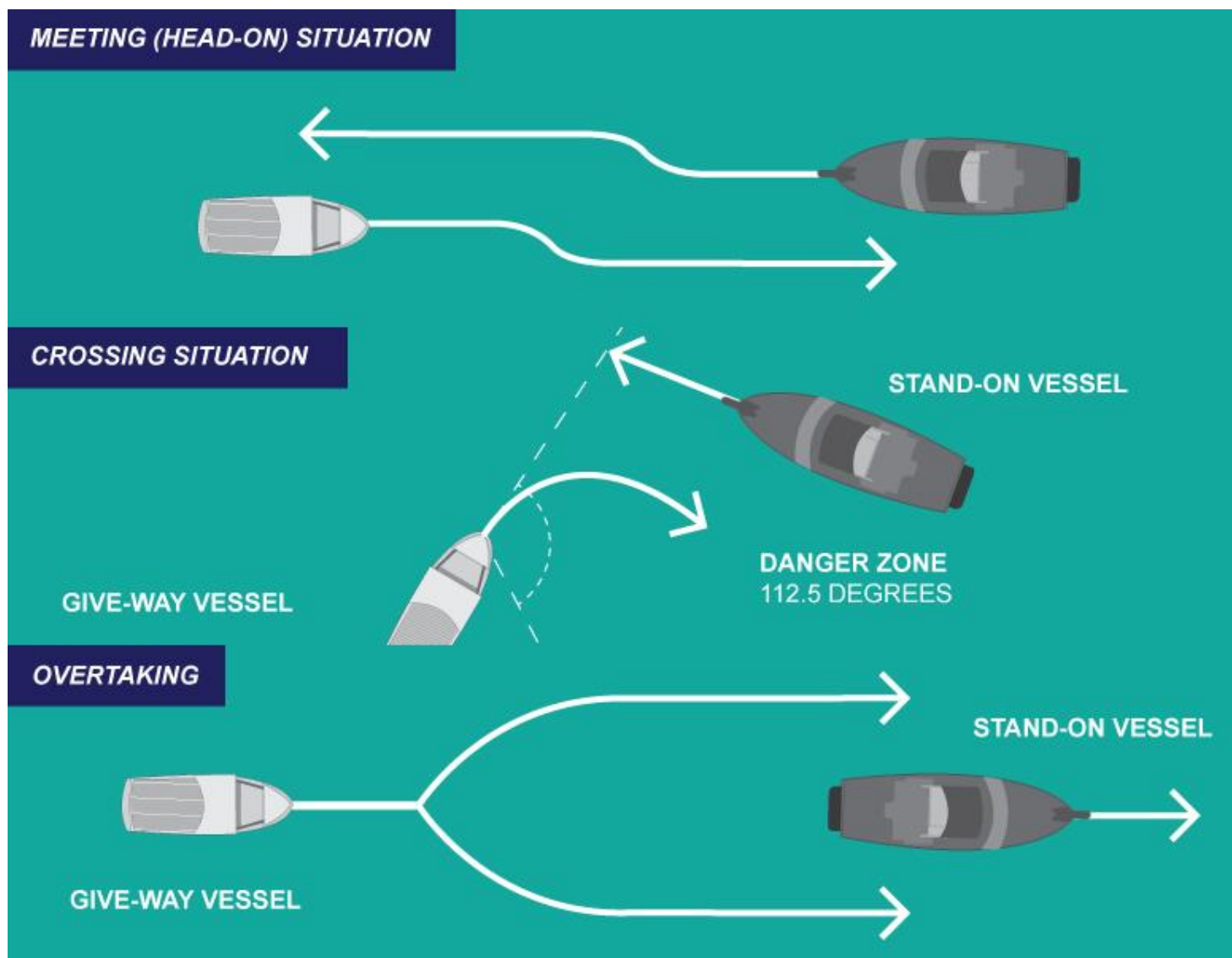
IALA SUSTAV A POGLED SA OTVORENOG MORA PREMA RIJECI, MARINI , OBALI – CRVENO NA LIJEVOJ STRANI



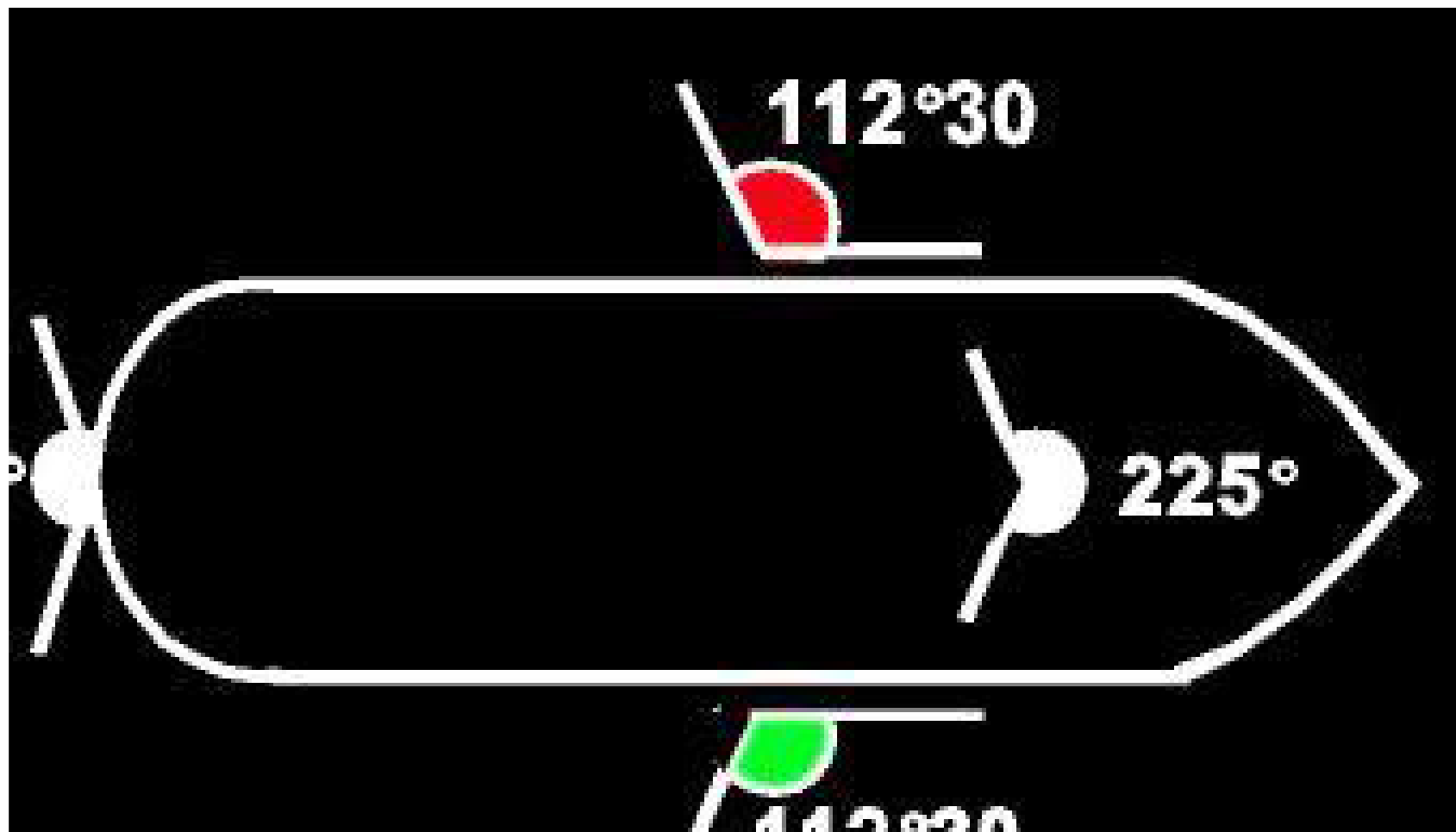
KARDINALNE OZNAKE OZNAČAVAJUNAJDUBLJU VODU ODNOSNO SIGURNU STRANU KOJOM TREBA PROĆI PORED OPASNOSTI



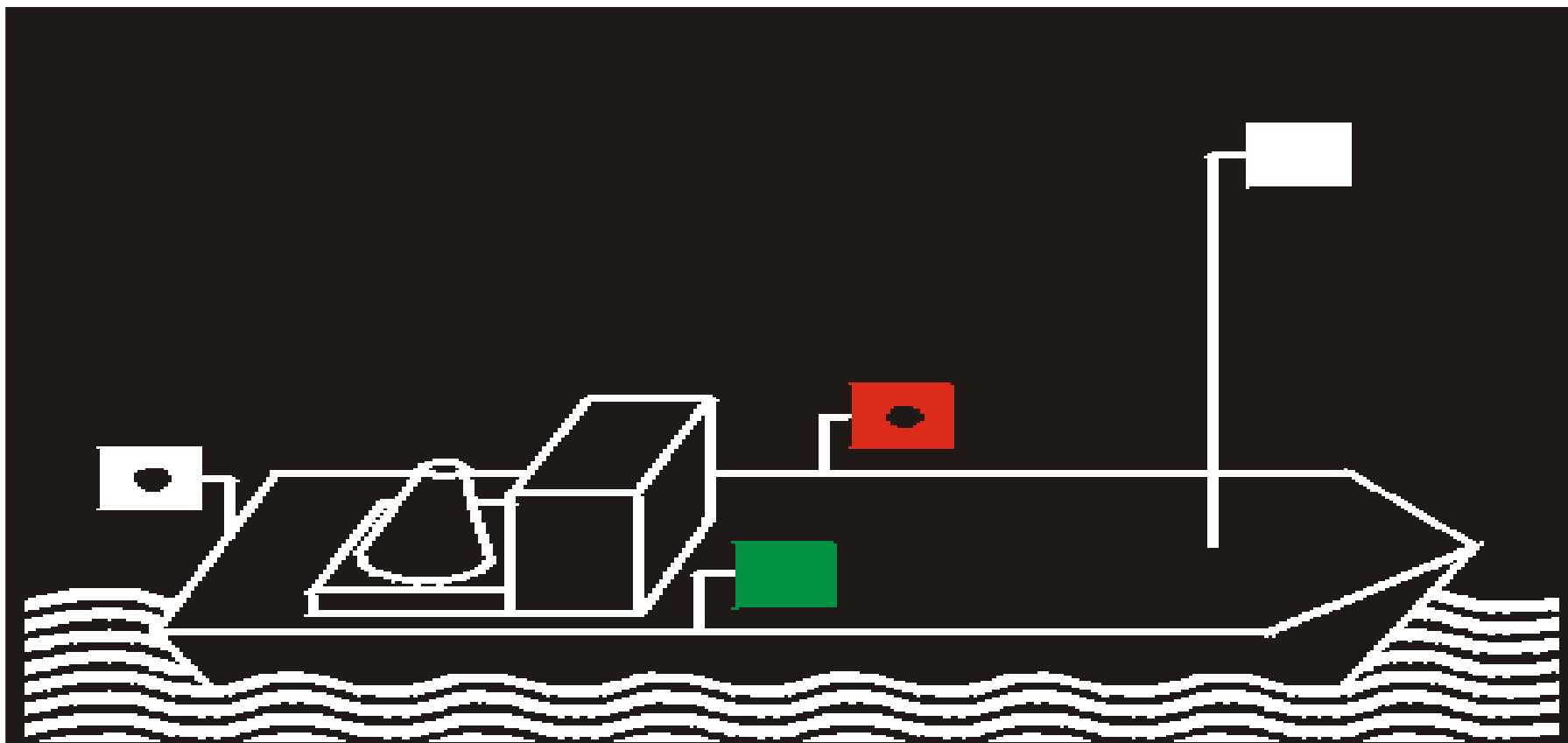
KOMBINACIJA KARDINALNIH I LATERALNIH OZNAKA



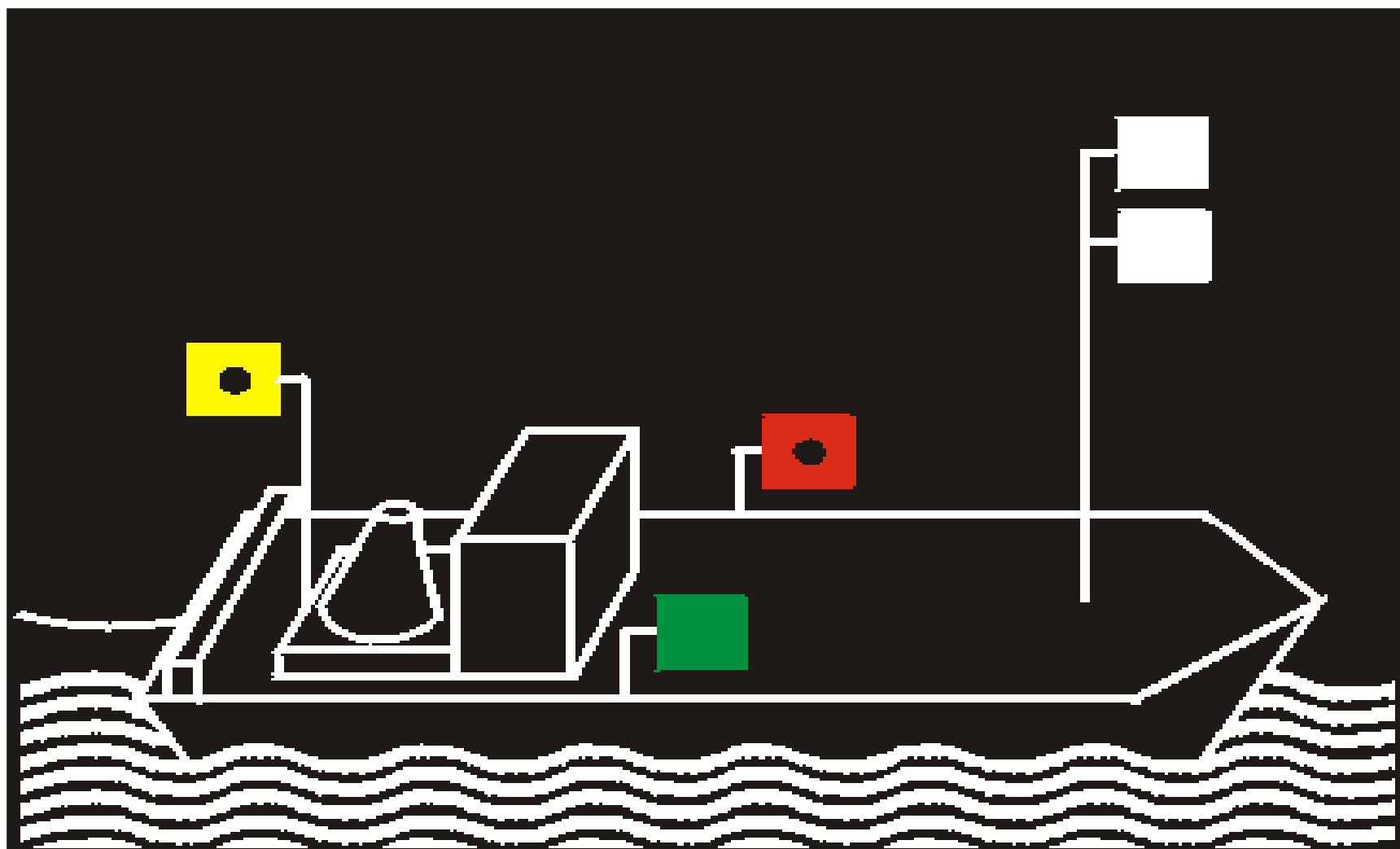
PRAVILA IZBJEGAVANJA SUDARA



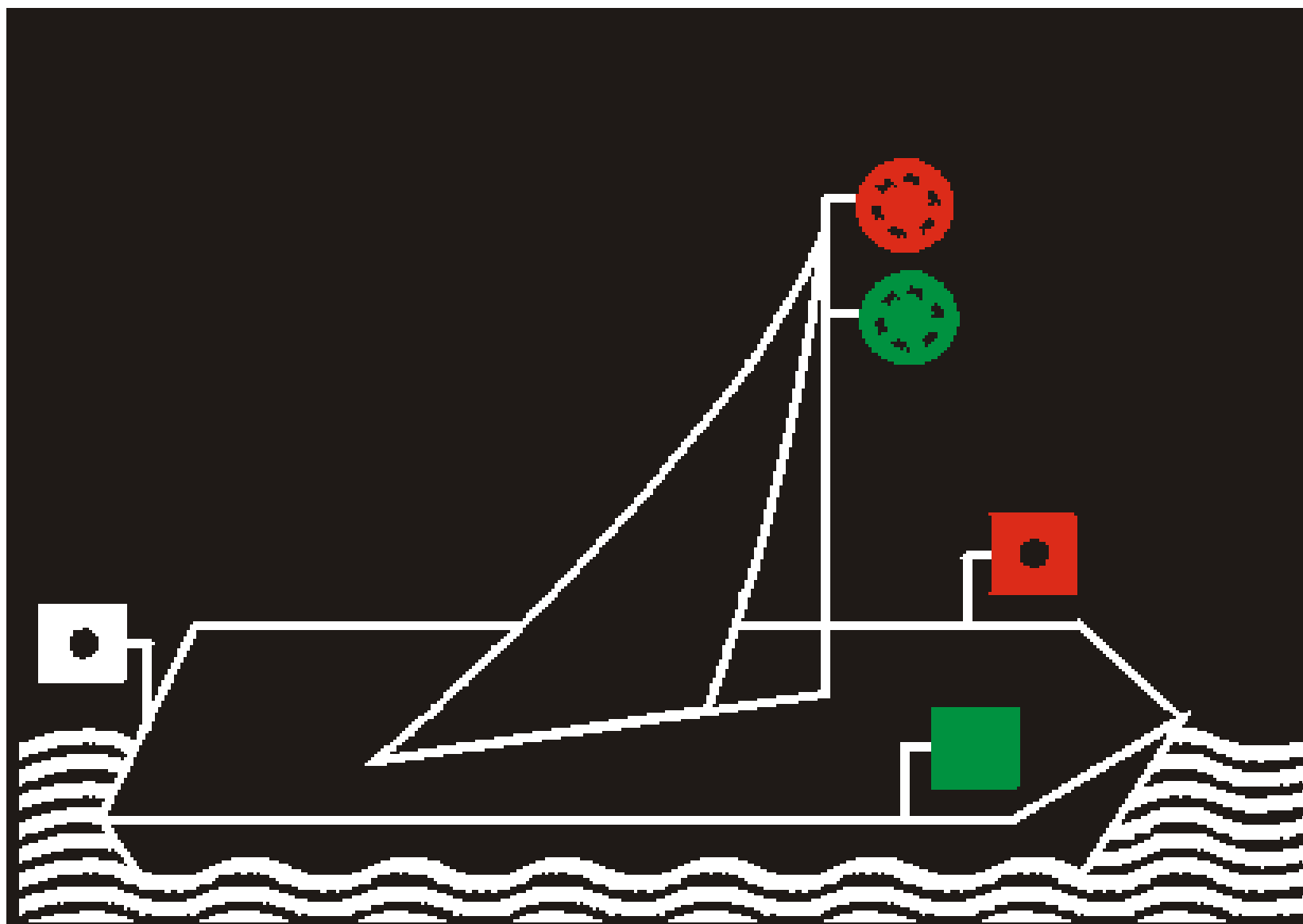
Tlocrt plovila dužeg od 7 metara



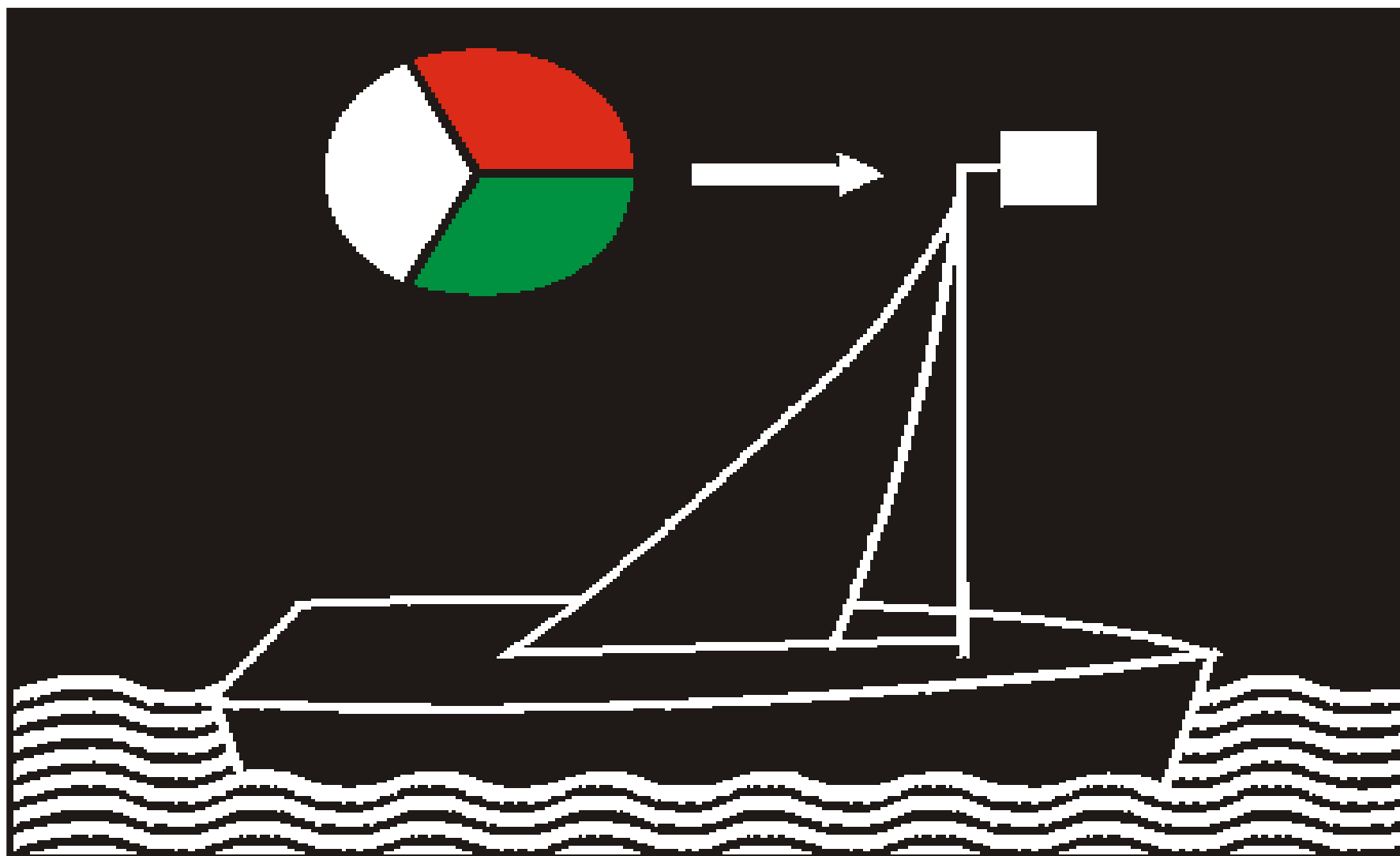
Brod ili čamac (brodica) duži od 7 metara isto kao predhodna slika



Tegljač na čelu tegljenog sastava

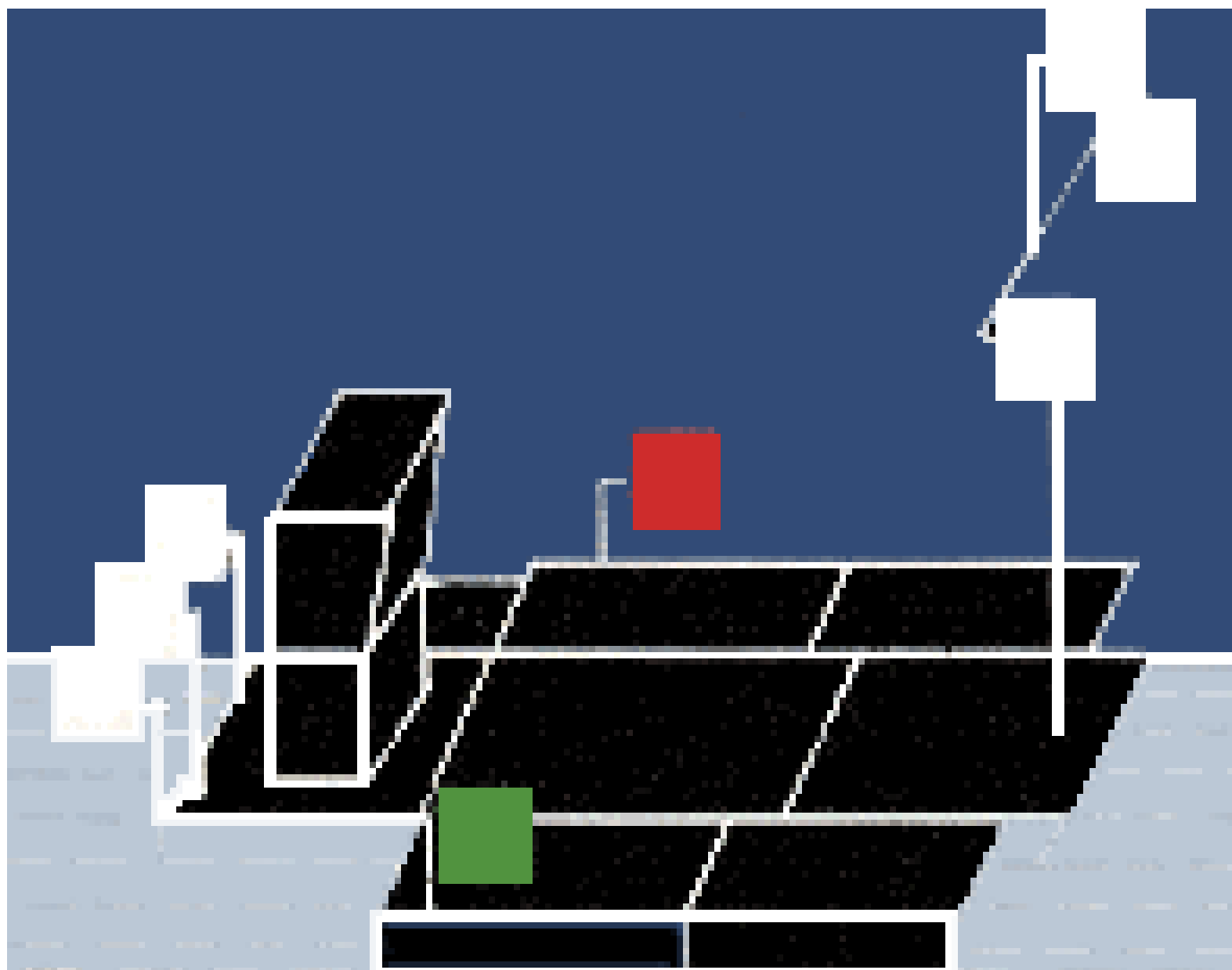


Jedrilica duža od 7 metara



Jedrilica kraća od 7 metara







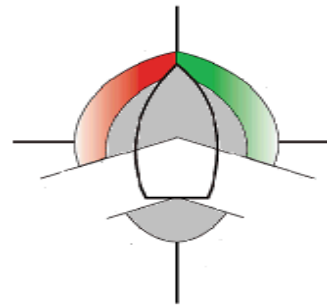
Pramac 225°



Lijeva strana
strana 112,5°

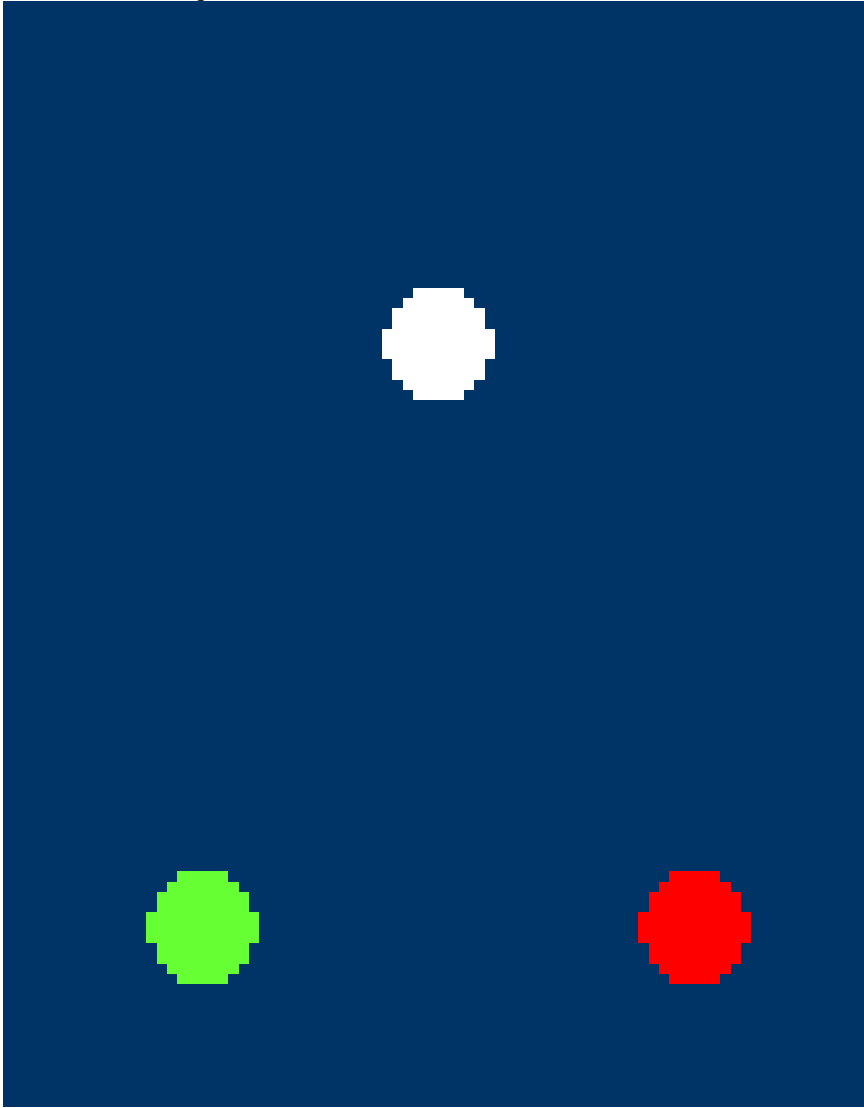


112,5° Desna



Krma 135°

Direktan protukurs noću

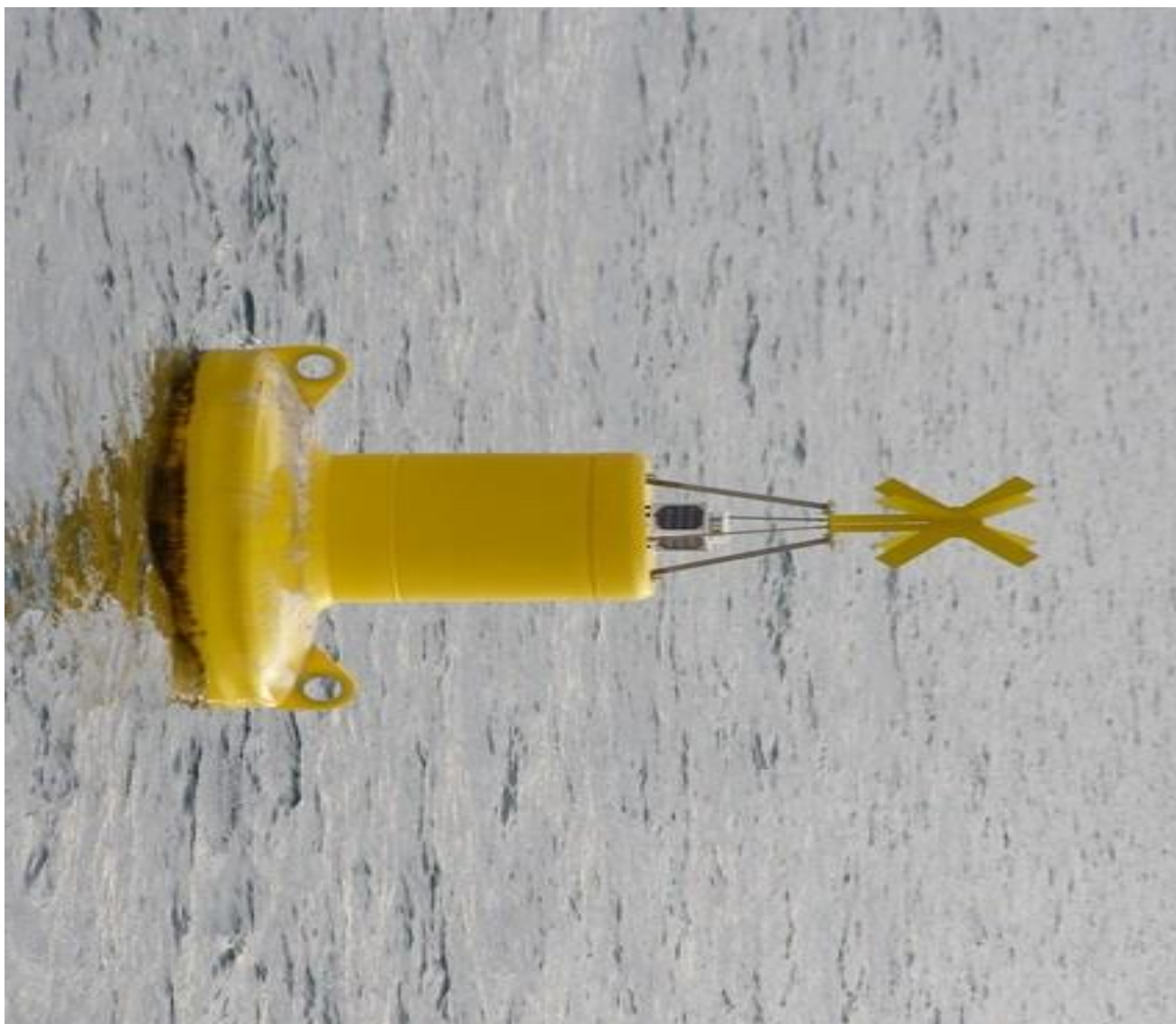




OZNAKA SIGURNIH VODA



OZNAKA USAMLJENE OPSANOSTI



PODVODNI CIJEVOVODI, GRAĐEVINE, KONSTRUKCIJE

